

## Parts List

Ref	Var	IPN	Description
C1		220-01720-03	PCB MFX Radio Remote
C3		038-10000-00	RES 0603 0R
C4		015-06470-01	Cap Cer 1206 470n X7r 20% 50v
C7		038-10000-00	RES 0603 0R
C9		038-10000-00	RES 0603 0R
C10		038-10000-00	RES 0603 0R
C203		018-13270-00	Cap 0603 270p 50v NPO±5%
C207		018-13270-00	Cap 0603 270p 50v NPO±5%
C209		018-13270-00	Cap 0603 270p 50v NPO±5%
DS1		008-00014-73	LED Hp Grn Rang PCB Mtg
J1		240-10000-11	Conn SMD 18w Skt M/Match
J3		240-00016-00	Conn RJ45 Shld 8P8C LP RA TH
R6		038-10000-00	RES 0603 0R
R7		038-15100-10	RES 0603 10k 1% 1/10W
R9		038-10000-00	RES 0603 0R
R12		038-10000-00	RES 0603 0R
R14		036-13560-10	RES 0805 560R 1% 1/8W
R203		038-13100-10	RES 0603 100R 1% 1/10W
R207		038-13100-10	RES 0603 100R 1% 1/10W
R209		038-13100-10	RES 0603 100R 1% 1/10W
R900		036-00000-01	RES 1206 0R 5% 0.25W
R901		036-00000-01	RES 1206 0R 5% 0.25W
R910		038-10000-00	RES 0603 0R
R912		038-10000-00	RES 0603 0R
R916		036-00000-01	RES 1206 0R 5% 0.25W
R918		038-10000-00	RES 0603 0R
R920		036-13560-10	RES 0805 560R 1% 1/8W

## Grid Reference Index

Ref	PCB	Circuit
C1	1:J2	1F5
C2	1:K1	1F4
C3	1:D2	1F1
C4	1:J1	1F6
C7	1:J2	1E5
C9	1:K2	1E6
C10	1:N2	1E7
C13	1:N2	1E7
C15	2:L2	1F8
C17	2:L2	1F6
C101	1:J1	1F3
C102	1:D1	1F2
C103	1:E2	1B5
C203	1:J2	1B4
C207	1:H2	1B3
C209	1:H2	1B4
C213	1:H1	1B4
DS1	1:F2	1F2
J1	1:H2	1C1
J2	1:N2	1C10
J3	1:L2	1E10
MT1	1:R2	1D10
R1	2:N2	1C8
R2	2:P2	1C7
R3	1:J1	1G4
R4	1:J1	1F4
R6	1:J1	1F5
R7	1:G2	1C3
R8	1:J1	1F6
R9	2:L2	1G6
R10	1:K2	1E6
R12	1:N2	1E7
R13	1:N2	1E7
R14	1:F2	1F2
R15	2:L2	1F7
R16	1:H2	1B3
R17	2:L2	1F7
R18	1:D2	1F2
R19	1:E2	1F2
R20	2:L2	1F8
R21	1:N2	1E7
R30	1:F2	1B8
R31	1:E2	1C7
R40	2:N2	1D9
R103	1:G2	1B5
R104	1:G2	1C5
R203	1:J2	1C3
R207	1:J2	1C3
R209	1:H2	1C3
R213	1:H2	1B3
R820	2:L2	1F8
R821	1:N2	1E8
R900	1:F2	1C7
R901	1:E2	1C7
R910	2:J2	1C8
R911	2:L2	1D9
R912	1:H2	1C3
R915	2:M2	1D9
R916	1:M2	1D9
R917	1:N2	1D9
R918	2:M2	1E9
R920	1:D2	1G2
U1	1:K1	1G6 1E6 1F3
U2	1:D2	1F1
U3	1:F2	1C6

TM8200 mobiles

# Control-Head Board (RJ45) PCB Information



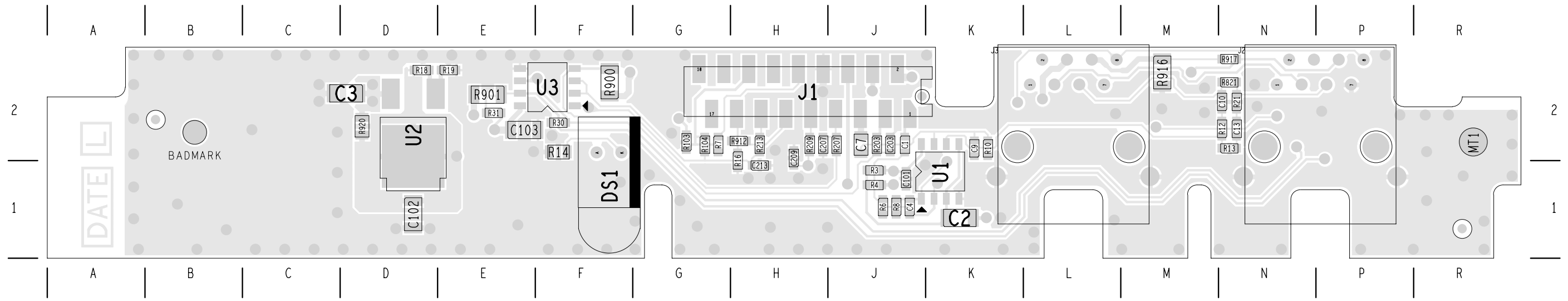
## PCB IPN 220-01720-03

This PCB information applies to the control-head board for the RJ45 control head.

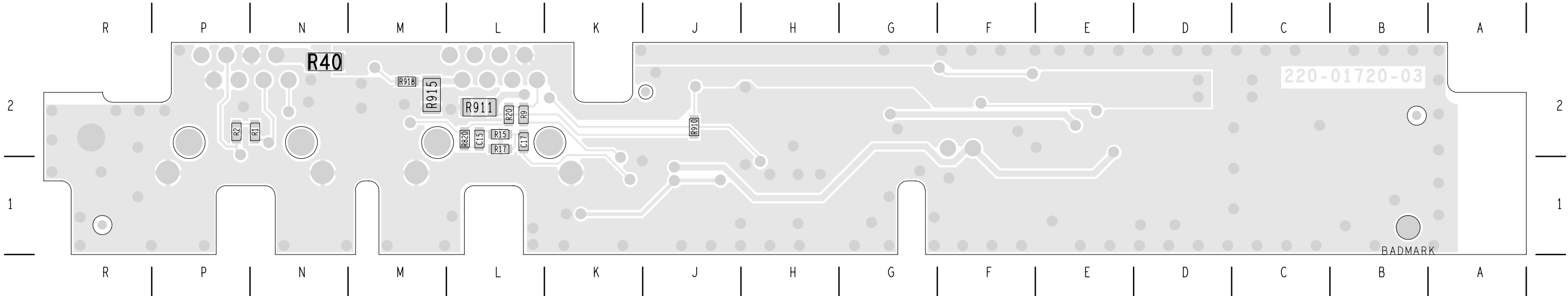
This document contains the following information:

- Parts List (Rev. 2) ..... Page 1
- Grid Reference Index ..... Page 1
- PCB Layout – Top Side ..... Page 2
- PCB Layout – Bottom Side ..... Page 3
- Circuit Diagram ..... Page 4

The component values in the circuit diagrams are indicative only. Refer to the parts list for actual values used.



TAIT ELECTRONICS	IPN: 220-01720-03	ISS: A	DATE: 29Jun05	SCALE: NTS
TM8200 Radio Remote LAYOUT-PRIMARY-SIDE				



TAIT ELECTRONICS	IPN: 220-01720-03	ISS: A	DATE: 29Jun05	SCALE: NTS
TM8200 Radio Remote LAYOUT-SECONDARY-SIDE				

